

Magic Gadgets™

-If you are looking for the connectors ONLY! Skip to page 3.

When ordering you will notice something about the new numbers; it's easy, here is how to order.

product. wattage. voltage. Enclosure. Connector

Example: SHM.6.120.PMT.5-15 = Shadowmaker.6kW.120VAC.Panel Mount. Edison

Product:

- QD** = Quick Dimmer
- PD** = PRODimmer
- SPD** = Studio PRODimmer
- FD** = Flicker/Dimmer
- F2D** = Flicker 2 Digital
- SHM** = Shadowmaker

Available Configurations:

- (2kW), (6kW= 3 x 2kW), (PMT & PT)
- (2kW, 6kW, 12kW, 24kW), (PMT & PT)
- (2kW, 6kW, 12kW, 24kW), (PMT & PT)
- (2kW), (PMT & PT)
- (2kW, 6kW, 12kW, 24kW), (PMT & PT)
- (6kW = 3 x 2kW), (PMT & PT)

Wattage:

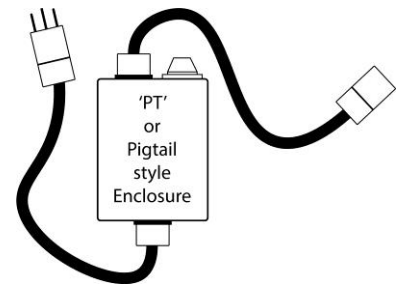
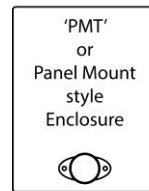
- 2** = 2,000 Watt
- 6** = 6,000 Watt (use for 3x2kW)
- 12** = 12,000 Watt
- 24** = 24,000 Watt

Voltage:

- 120** = 120 VAC
- 240** = 240 VAC

Enclosure type:

- PMT** = Panel Mount Connectors (Edison 5-15 P/R Standard)
- PT** = Pigtailed (Edison 5-15 P/R Standard)



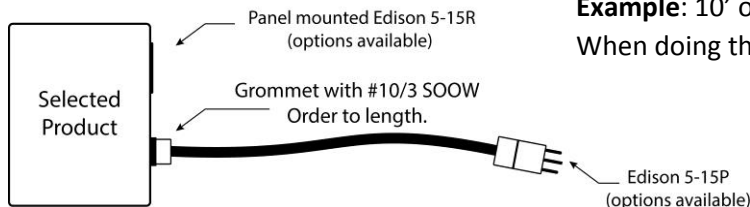
Connector type (See list of connectors below List Pricing):

5-15 = Edison 5-15 P/R 15Amp, **SP/B** = Stage Pin or 'Bates' 20Amp

When ordering different connectors, use the style or 'type' number (marked in yellow)!

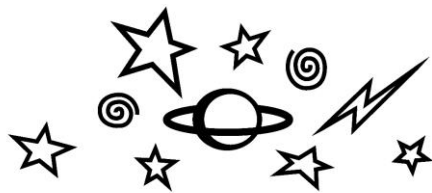
Example: 5-15 = Standard 15Amp 125VAC Plug & Socket Edison

Example: Custom wiring setup!



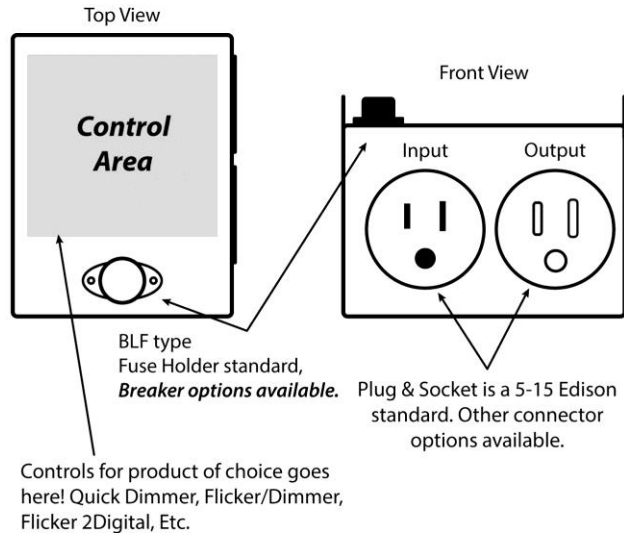
You can also mix & match the in's & out's!

Example: 10' of 10AWG in with 5-15P & a single 5-15R out.
When doing this, use the **PMT** enclosure type!



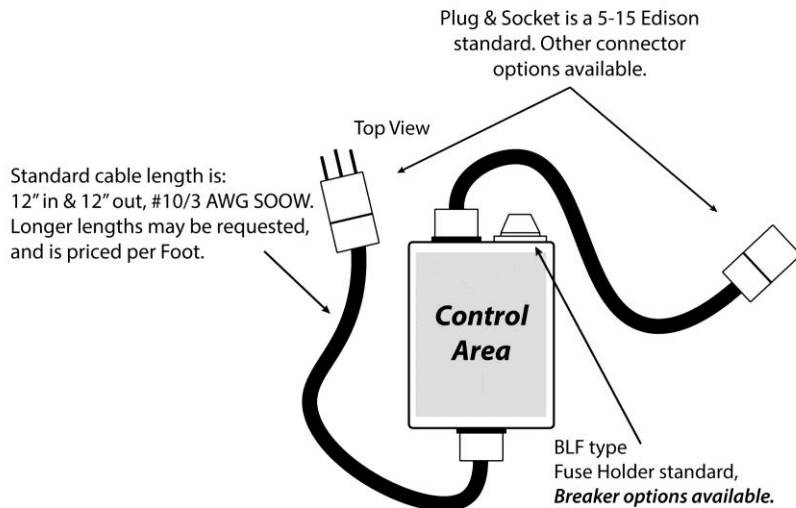
Magic Gadgets™

This is an example of our STANDARD 2kW Enclosure with **Panel** mounted connectors.



Panel mount (PMT) & Pigtail (PT) versions of our 6kW, 12kW & 24kW products share the same concept. Using high amperage breakers & Bates connectors, or the 'No Connectors' option (use only when supplying your own connectors).

This is an example of our Optional 2kW Enclosure with **Pigtail** mounted connectors.



3 Channel versions also share the same input/output wiring concept (there's just 3 of them).

When a product is ordered for 240V the unit is equipped with #16/3 SOOW cable & 15A fuses. See Available connectors list for your connector type.



Magic Gadgets™



Edison 5-15P
125VAC 15A
PANEL MOUNT



Edison 5-15P
125VAC 15A
CABLE MOUNT



Edison 5-15PA
125VAC 15A
CABLE MOUNT



Stage Pin/BATES
125VAC 20A
PANEL MOUNT



Edison 5-15R
125VAC 15A
PANEL MOUNT



Edison 5-15R
125VAC 15A
CABLE MOUNT



Edison 5-15RA
125VAC 15A
CABLE MOUNT



Stage Pin/BATES
125VAC 20A
PANEL MOUNT



Edison 5-20P
125VAC 20A
PANEL MOUNT



Edison 5-20P
125VAC 20A
CABLE MOUNT



Edison 5-20PA
125VAC 20A
CABLE MOUNT



Stage Pin/BATES
125VAC 20A
CABLE MOUNT



Edison 5-20R
125VAC 15/20A
PANEL MOUNT



Edison 5-20R
125VAC 15/20A
CABLE MOUNT



Edison 5-20RA
125VAC 15/20A
CABLE MOUNT



Stage Pin/BATES
125VAC 20A
CABLE MOUNT



Magic Gadgets™



Locking L5-15P
125VAC 15A
PANEL MOUNT



Locking L5-15P
125VAC 15A
CABLE MOUNT



Locking L5-20P
125VAC 20A
CABLE MOUNT

We have fully custom extension cable services available!

Depending on your specific application we can make Triple Taps, Quad splitters, Braided, Shielded, Whatever you need!

Just Ask We're Here to Help!



Locking L5-15R
125VAC 15A
PANEL MOUNT



Locking L5-15R
125VAC 15A
CABLE MOUNT



Locking L5-20R
125VAC 20A
CABLE MOUNT

- SIZES AVAILABLE**
- #16/3 SO or SJ
 - #14/3 SO or SJ
 - #12/3 SO or SJ
 - #10/3 SO or SJ
 - #8/3 SOOW
 - #6/3 SOOW
 - #4/3 SOOW
 - 3x #2 SOOW



Stage Pin/BATES
Male 125VAC 60A
CABLE MOUNT



Stage Pin/BATES
Male 125VAC 100A
CABLE MOUNT



Stage Pin/BATES
Male 250VAC 100A
CABLE MOUNT

SO=Standard wall
SJ=Thin wall

Wire & Cable Based on market price!



Stage Pin/BATES
Female 125VAC 60A
CABLE MOUNT



Stage Pin/BATES
Female 125VAC 100A
CABLE MOUNT

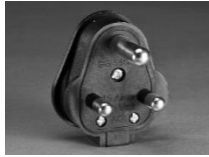


Stage Pin/BATES
Female 250VAC 100A
CABLE MOUNT

RipTie Brand cord wrap included with extension cable service!



Magic Gadgets™



A: S. Africa, India
Type D, M, N



D: Brazil
Type N



G: Italy, Chile
Type L



J: UK, Ireland
TYPE G



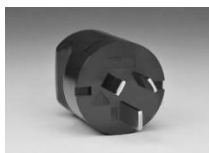
B: Argentina
Type I



E: Denmark, Danish
Type K



H: Schuko
Type E, F



C: Australia, New Zealand
Type I



F: Israel, Israeli
Type H



I: Swiss, Switzerland
Type J



L6-15PF



L6-15RF



L6-15PC



L6-15RC

Use this kit for multiple country adapters! Sold in a set of 2pcs L6-15P, 2pcs L6-15R & 2pcs P/R (connectors of choice at LEFT) 250V 15A



Magic Gadgets™



Japan C-20
20A



Japan C-30
30A



Japan C-60
60A



Japan C-100
100A